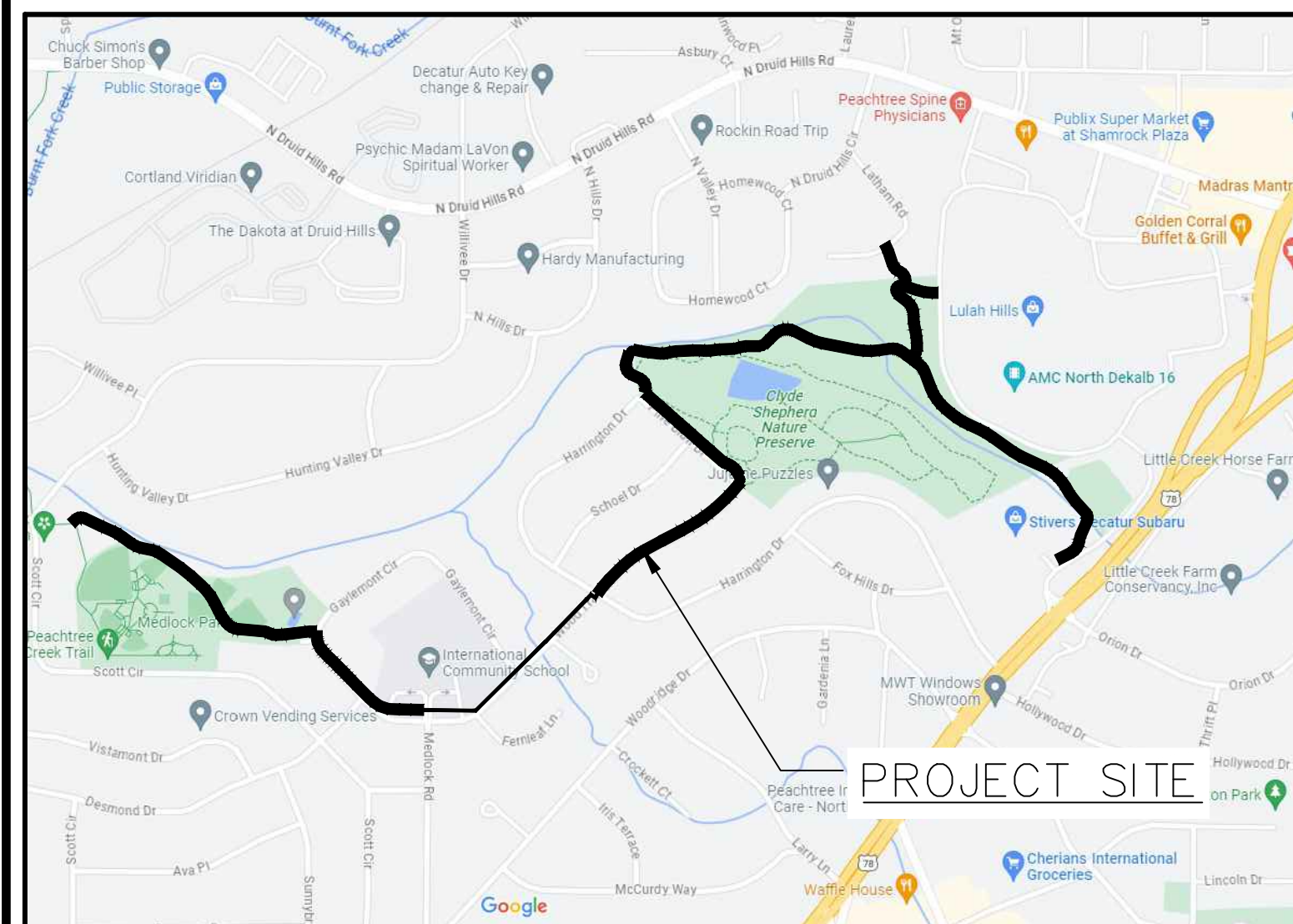


# SOUTH PEACHTREE CREEK TRAIL MEDLOCK PARK TO LULAH HILLS - PHASE 1

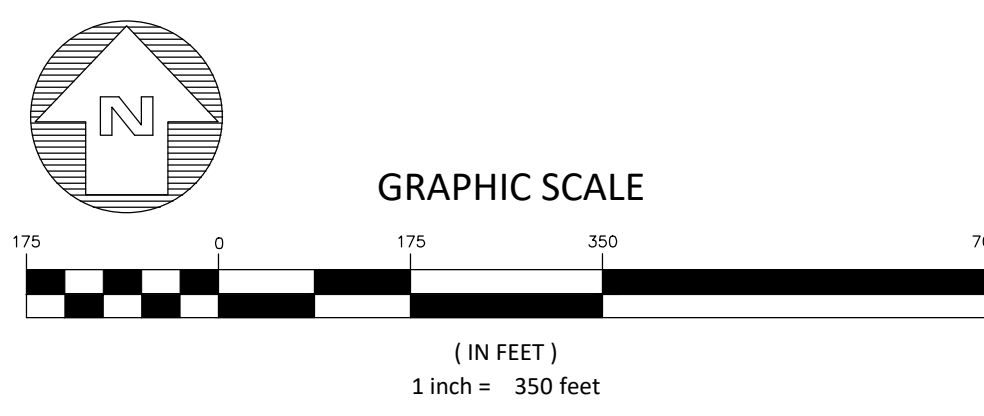
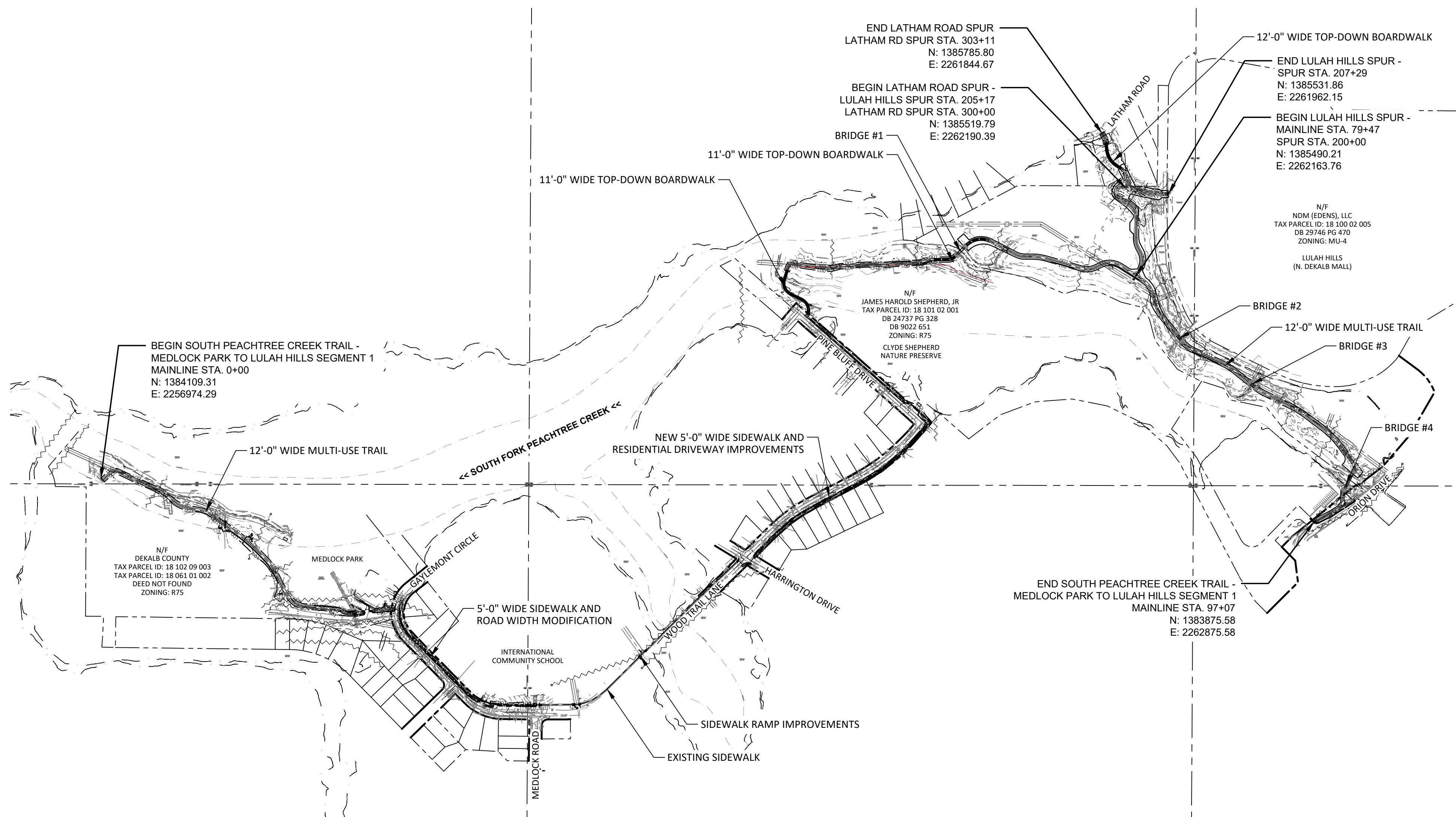
## DEKALB COUNTY, GA

DEKALB COUNTY DEVELOPMENT FILE # 1246833



VICINITY MAP  
N.T.S.  
2ND DISTRICT

IT IS THE RESPONSIBILITY OF THE OWNER/DEVELOPER/ CONTRACTOR TO OBTAIN THE NECESSARY EASEMENTS (CONSTRUCTION AND PERMANENT) BEFORE BEGINNING CONSTRUCTION.



**INDEX OF SHEETS**

- GENERAL
- CS-01 COVER SHEET (THIS SHEET)
- GN-01 GENERAL NOTES
- CM-01 COMPOSITE MAP
- TOPOGRAPHIC SURVEY
- 1-6 TOPOGRAPHIC SURVEY
- TREE PROTECTION PLAN & REPLACEMENT PLANS
- TP-00 TO TP-04 TREE PROTECTION AND PLANTING DETAILS
- TP-01 TO TP-15 TREE PROTECTION & REPLACEMENT PLAN
- TYPICAL SECTIONS
- TS-01 TO TS-04 TYPICAL SECTIONS
- CONSTRUCTION PLANS
- CP-01 TO CP-15 CONSTRUCTION PLAN
- CONSTRUCTION DETAILS
- CD-01 TO CD-05 CONSTRUCTION DETAILS
- STRUCTURAL PLANS
- SIGNING AND MARKING PLANS
- SM-00 TO SM-08 SIGNING AND MARKING DETAILS
- SM-01 TO SM-15 SIGNING AND MARKING PLANS
- EROSION, SEDIMENT & POLLUTION
- EC-01 TO EC-15 EROSION, SEDIMENT & POLLUTION CONTROL PLAN
- EC-16 STORMWATER BASIN MAP
- EC-17 TO EC-19 COMPREHENSIVE MONITORING PLAN
- EC-01 TO ECD-04 EROSION DETAILS

- ALL WORK TO BE DONE IN ACCORDANCE WITH THE FOLLOWING APPLICABLE CODES:
- THE GEORGIA DEPARTMENT OF TRANSPORTATION STANDARD SPECIFICATIONS AND SUPPLEMENTAL SPECIFICATIONS, CURRENT EDITION
  - 2010 AMERICANS WITH DISABILITIES ACT (ADA) STANDARDS FOR ACCESSIBLE DESIGN
  - ARCHITECTURAL BARRIERS ACT (ABA) ACCESSIBILITY STANDARDS
  - PUBLIC RIGHT-OF-WAY ACCESSIBILITY GUIDELINES

**COORDINATE DATA**

HORIZ. DATUM - GA. STATE PLANE COORDINATE SYSTEM  
 VERT. DATUM - NAVD 1988  
 COORDINATE ZONE - GEORGIA WEST  
 PROJECT UNITS - ENGLISH

BOUNDARY AND TOPOGRAPHIC SURVEY INFORMATION PROVIDED BY:  
 PLANNERS & ENGINEERS COLLABORATIVE+  
 350 RESEARCH COURT, SUITE 200,  
 PEACHTREE CORNERS, GEORGIA 30092.  
 770-451-2741

**PROJECT DESCRIPTION**

THE PROJECT FALLS WITHIN LAND LOT 61, 62, 63, 100, 101, AND 102 IN DISTRICT 2. THIS PROJECT WILL NOT REQUIRE ANY ZONING BUFFERS.

THIS IS A TRAIL PROJECT WHICH IS BEING BUILT ON DEKALB COUNTY EASEMENT - THEREFORE THE PROPOSED USE OF THE PROJECT IS CONSISTENT WITH ZONING.

THE LIMITS OF DISTURBANCE IS APPROXIMATELY 5.07 ACRES. THE SITE FALLS WITHIN 25' OF STATE STREAM BUFFER AND WITHIN THE 100 YEAR FLOODPLAIN (PER FIRM PANELS 13089C0067K AND 13089C0066K; DATED AUGUST 15, 2019). A 25' STATE STREAM BUFFER VARIANCE PERMIT WILL BE OBTAINED PRIOR TO CONSTRUCTION.

**NARRATIVE**

THIS PROJECT IS A GREENWAY TRAIL AND SIDEWALK IMPROVEMENTS CONNECTING THE EXISTING SOUTH RIVER TRAIL AT MEDLOCK PARK TO THE NEW LULAH HILLS DEVELOPMENT. (FORMERLY KNOWN AS NORTH DEKALB MALL)

THE PROJECT ENTAILS APPROXIMATELY 6,665 LF OF 10' TO 12' WIDE CONCRETE MULTI-USE TRAIL, 4,160 LF OF SIDEWALK IMPROVEMENTS, NEW ADA ACCESSIBLE RAMPS ALONG EXISTING SIDEWALKS, 4 BRIDGE CROSSINGS, TOP-DOWN BOARDWALK, TRAIL AMENITIES, AND SIGNAGE. ADDITIONAL WORK ASSOCIATED WITH THE PROJECT INCLUDES MINOR DEMOLITION AND CLEARING, EROSION CONTROL, AND GRADING.

**OWNER/DEVELOPER (PRIMARY PERMITTEE)**

DEKALB COUNTY  
 1950 WEST EXCHANGE PLACE, RM 400  
 TUCKER, GA 30084  
 CONTACT: DAVID W. PELTON  
 770-492-5223

**CONSTRUCTION MANAGEMENT**

PATH FOUNDATION  
 PETE PELLEGRINI - 24 HOUR CONTACT  
 GA GSWCC LEVEL 1 CERTIFICATION # 0000029813  
 12/21/2025  
 office 404-875-7284 x2      cell 404-277-5392

**ENGINEER'S CERTIFICATION STATEMENT:**

With my initials at the line above and my seal and signature below, I Charles M. Abbott, a professional Engineer, licensed in the State of Georgia, hereby certify that I have personally reviewed the attached submittal plans for a land disturbance permit. In my opinion these submittal plans meet all applicable regulations and ordinances of DeKalb County and other affected parties may rely on this certification.

Signed: *Charles M. Abbott* Georgia Registration # NO. 31674  
 Date: JANUARY 05, 2024

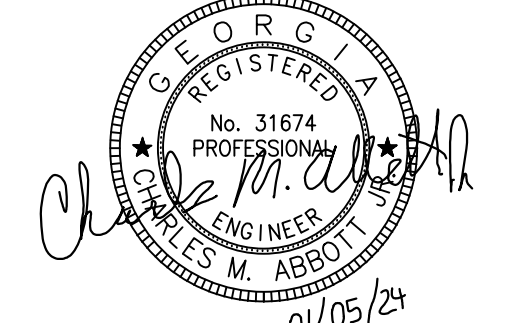
GROSS LENGTH OF PROJECT: 10,825 LF  
 TOTAL SITE AREA = 5.07 ACRE  
 DISTURBED AREA = 5.07 ACRE  
**TOTAL IMPERVIOUS AREA = 1.85 ACRE (36% OF TOTAL AREA)**

N.P.D.E.S FEE TO STATE = \$40/ACRE;  
 TOTAL FEE TO STATE = \$203  
 N.P.D.E.S FEE TO COUNTY = \$40/ACRE;  
 TOTAL FEE TO COUNTY = \$203

REVISION DATE	DESCRIPTION
1 09/01/2023	30% DESIGN
2 12/08/2023	60% DESIGN REVIEW
3 01/05/2024	60% DESIGN

**PLANS PREPARED BY:**

**KAIZENCOLLABORATIVE**  
 2390 Main Street | Tucker, GA 30084 | 404.239.2521  
 CHARLES M. ABBOTT JR, P.E.  
 DESIGN ENGINEER LEVEL II CERTIFICATION  
 GSWCC # 0000041686 EXPIRES: 04/28/2025  
 CHUCK.ABBOTT@KAIZENCOLLABORATIVE.COM  
 T: 404-239-2521



SOUTH PEACHTREE CREEK TRAIL: MEDLOCK PARK TO LULAH HILLS - PHASE 1  
 KAIZEN PROJECT # 2023-262  
 01/05/2024 60% DESIGN